



Table of Contents

Introduction.....	1
Welcome	1
Introduction to the USB Gigabit Adapter	3
The Package	3
LED Indicators.....	3
Ports	4
Setup Utility for the SocketSerial USB Gigabit Ethernet Adapter	5
Windows Setup	5
Windows XP Setup	5
Windows Mobile Setup.....	8
Automated Install with ActiveSync	8
Manual Installation with CAB	12
Physical connection	13
PDA and handheld computers	13
Laptop or Desktop computer	14
Trouble Shooting	15
Specifications.....	16

Introduction

Welcome

Thank you for choosing the SocketSerial USB Gigabit Ethernet Adapter. You have chosen one of the top USB Ethernet adapters currently available. We have specifically designed our product for the user on the go. When your connectivity environment is constantly changing, it's good to know you have a product you can count on to get you connected when you need it.

The SocketSerial USB Gigabit Ethernet Adapter will seamlessly connect to Gigabit, 100 mbps, or even 10 mbps networks. It will choose the fastest speed available to ensure the maximum performance for you to exchange data over the Ethernet. Whether you are using a new laptop supporting the latest Vista 64bit OS or a handheld computer such as Socket Mobile's SoMo series supporting Windows Mobile 6.0, rest assured that you will be able to communicate to the Ethernet network. Our USB Gigabit Ethernet Adapter supports Windows Mobile 5.0, 6.0, CE 5.0, as well as Windows XP 32-bit and 64-bit OS,



SocketSerial USB Gigabit Ethernet Adapter

and Windows Vista 32-bit and 64-bit OS making this adapter one of the largest OS supported adapters in the market.

Powered by the USB port, the SocketSerial USB Gigabit Ethernet Adapter is a low power-consuming device. The easy to read LED lights let you know when you are connected and the speed of the network being negotiated. Our adapter provides you reassurance that you can connect your laptop or handheld computer during some of the most challenging conditions.

Let's get started! This guide will help you to set up the software and get you connected.

Introduction to the USB Gigabit Adapter



The Package

You have purchased one of the most advanced USB Gigabit Ethernet adapters on the market. In addition to auto negotiating speeds up to 1 Gigabit, your adapter supports desktop, laptop, and mobile environments. The adapter comes with a short Ethernet cable, a USB-A to USB-B cable, and a handy traveling case to make it convenient to take with you on trips where you may need to quickly establish an Internet connection. The Traveler's series is designed to help you connect during some of the most difficult times.

LED Indicators:

The SocketSerial USB Gigabit Ethernet Adapter has two LED indicators in front on the top of the unit to give you instant feedback on your connection status.

The Link LED light will turn green when you are



SocketSerial USB Gigabit Ethernet Adapter

successfully connected to a network. (shown in green in the picture.)

The TX/RX LED will blink when data is being transferred and will turn the following colors to indicate the speed of the network it has established. (Shown in orange in the picture)

- 10 mbps – Orange + Green
- 100 mbps – Orange
- Gigabit - Green



Ports:

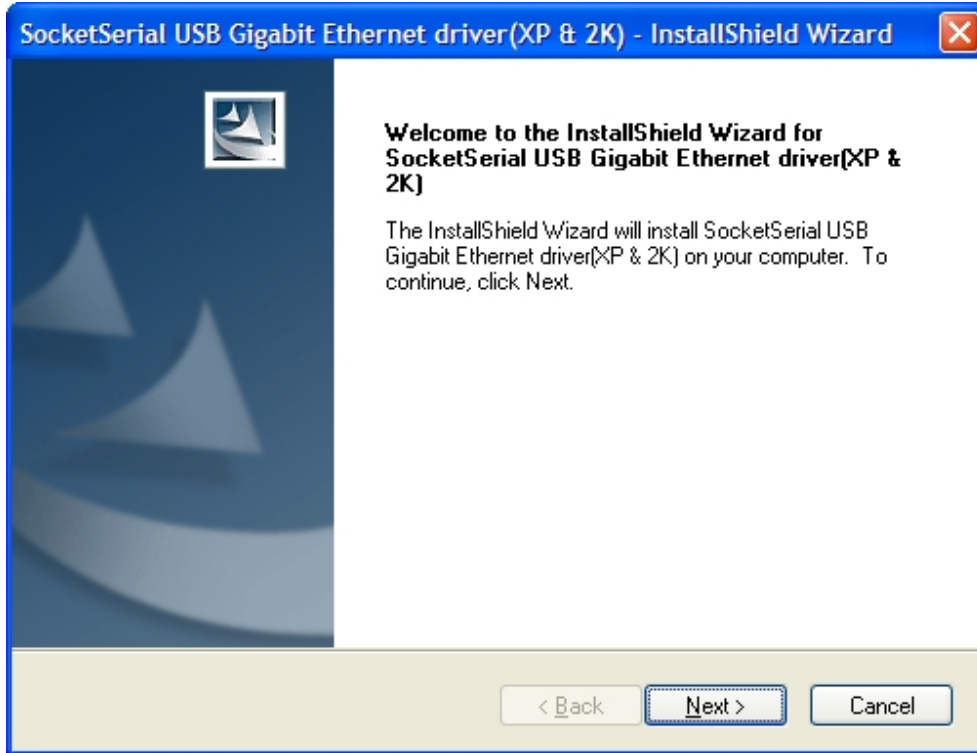
The USB connection port is at the bottom of the unit. You can use the included USB cable to attach your laptop or handheld computer to the adapter.



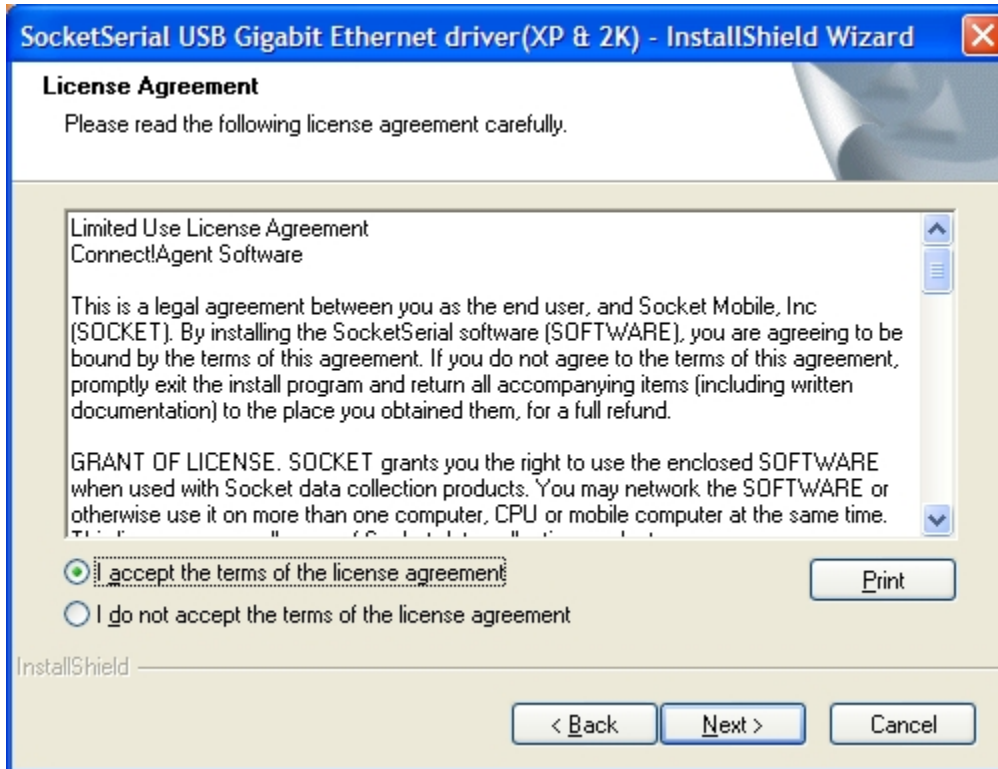
The Ethernet connection port is at the top of the unit. If an Ethernet cable is not provided at your location, you can use the included Ethernet cable to plug in the adapter to another Ethernet port that is connected to where you wish to communicate.



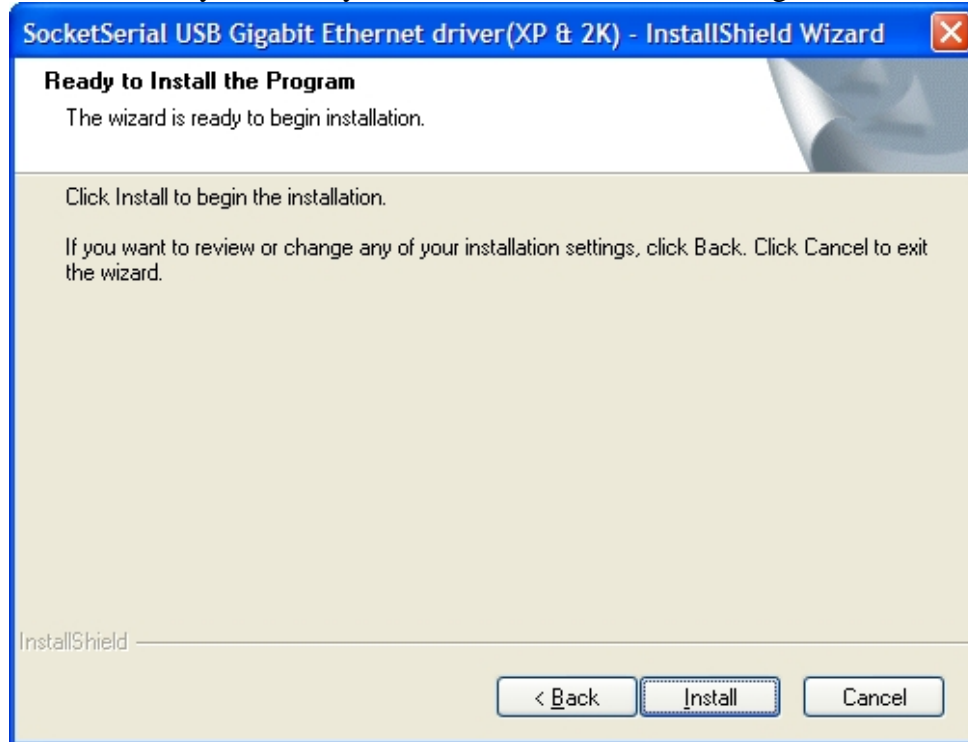
4. After selecting the appropriate OS, a welcome screen appears. Select 'Next' to continue.



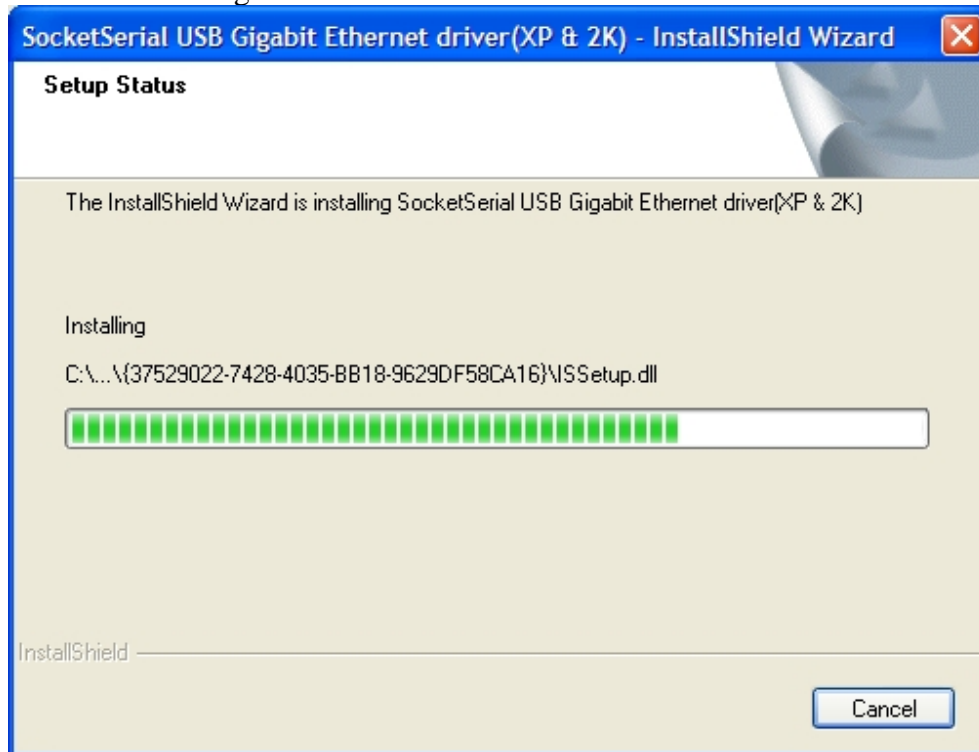
5. The licensing agreement appears. Accept the agreement, and then click 'Next' to continue.



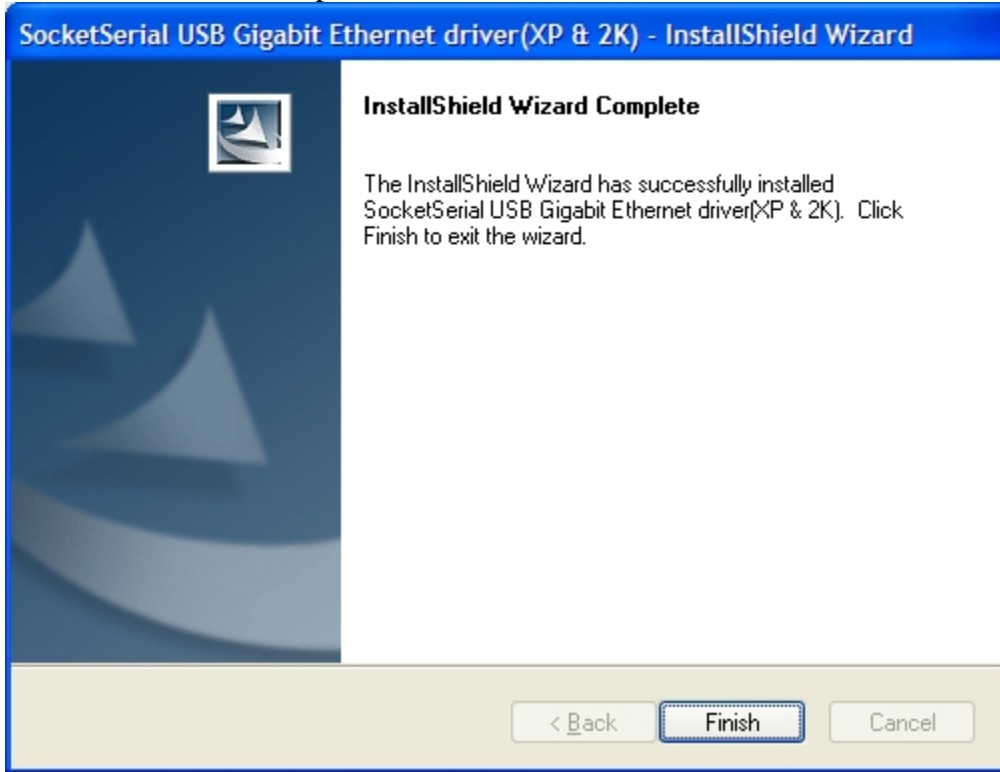
6. You are now ready to install your drivers. Select 'Install' to begin the installation.



7. The installation begins...



8. The installation completes. Click on 'Finish' to exit.



You have successfully installed the SocketSerial USB Gigabit Ethernet adapter. You may now plug in the adapter to the USB slot of your computer and begin using it.

Windows Mobile Setup

Socket Serial offers the convenience and versatility of using the USB Gigabit Ethernet Adapter with PDA and hand-held computers running Windows Mobile 5.0 or 6.0. You can either install the drivers on your Windows Mobile system by using the automated install on the installation CD that uses ActiveSync or you can install by using the CAB files directly (Advanced users).

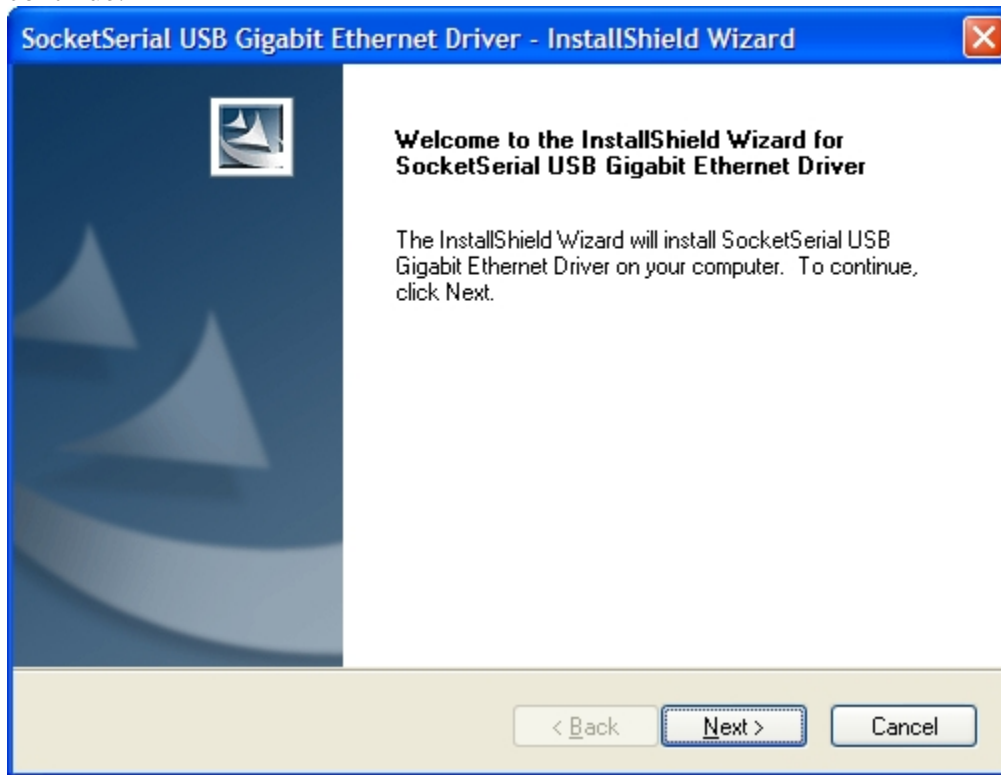
Automated Install with ActiveSync

To install using the ActiveSync, make sure that your hand-held device is attached to your Windows computer, that ActiveSync is running on your system, and that the Installation CD is in your Windows computer. If the CD hasn't automatically started, click on '**Setup.exe**' to run the installation program.

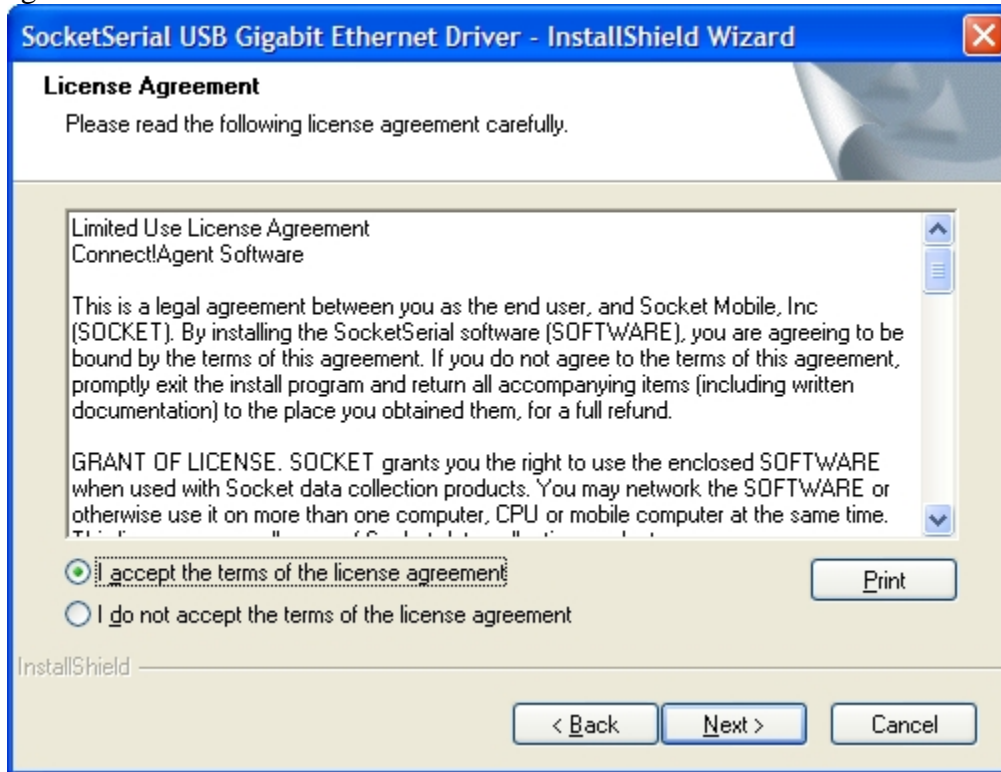
1. From the installation menu tab, click on the highlighted 'Windows Mobile'.



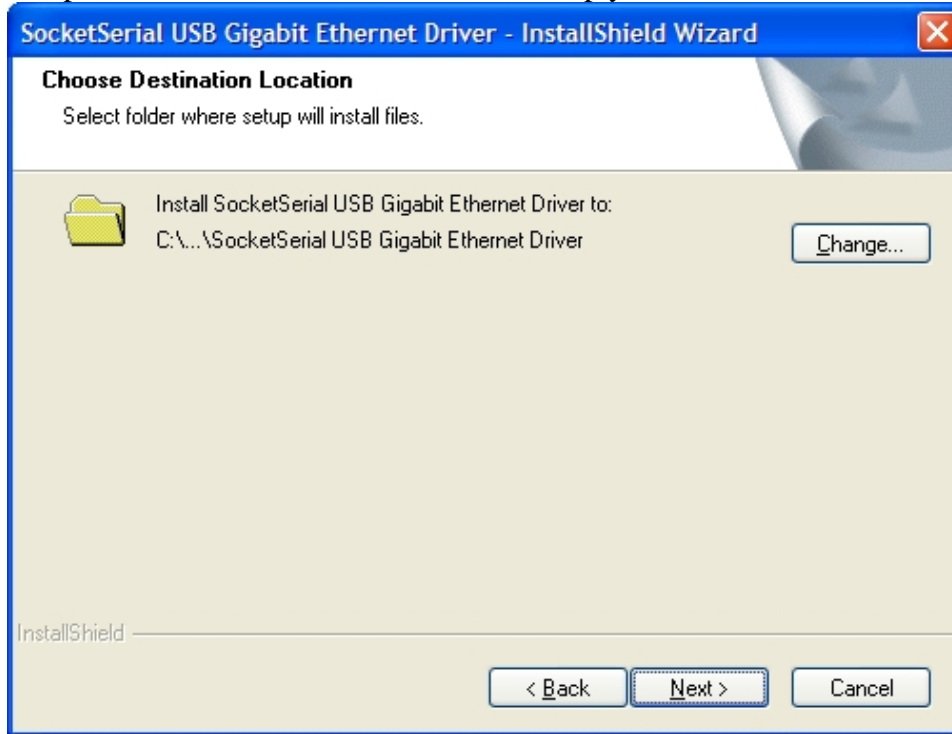
2. The Windows Mobile install screen will appear. Click on 'Next' to continue.



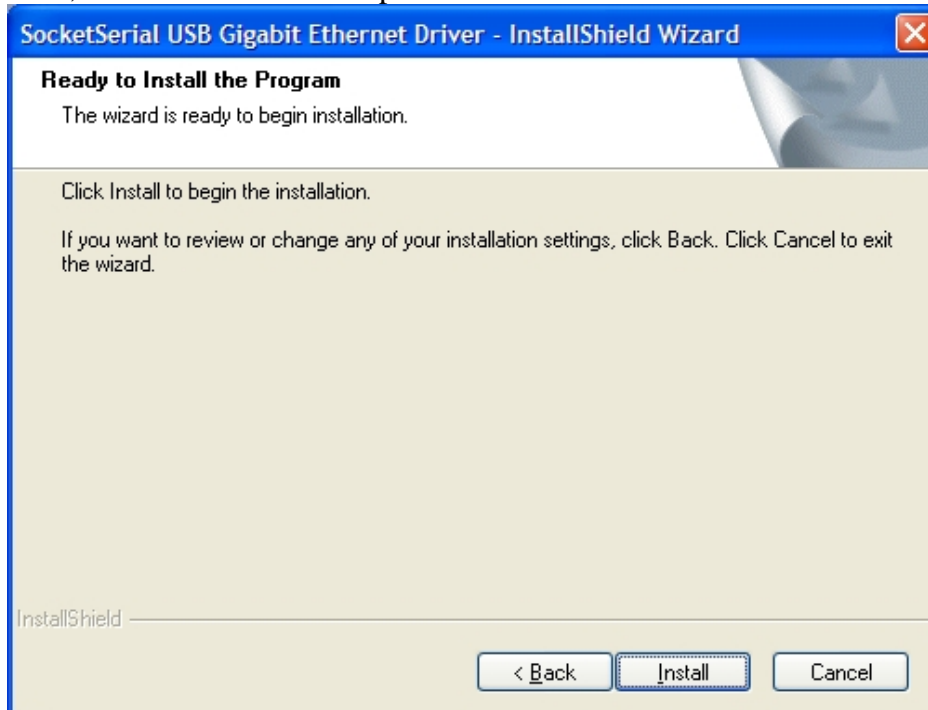
3. The license agreement will popup. Select “I accept the terms of the license agreement’ to continue. Then select ‘Next’.



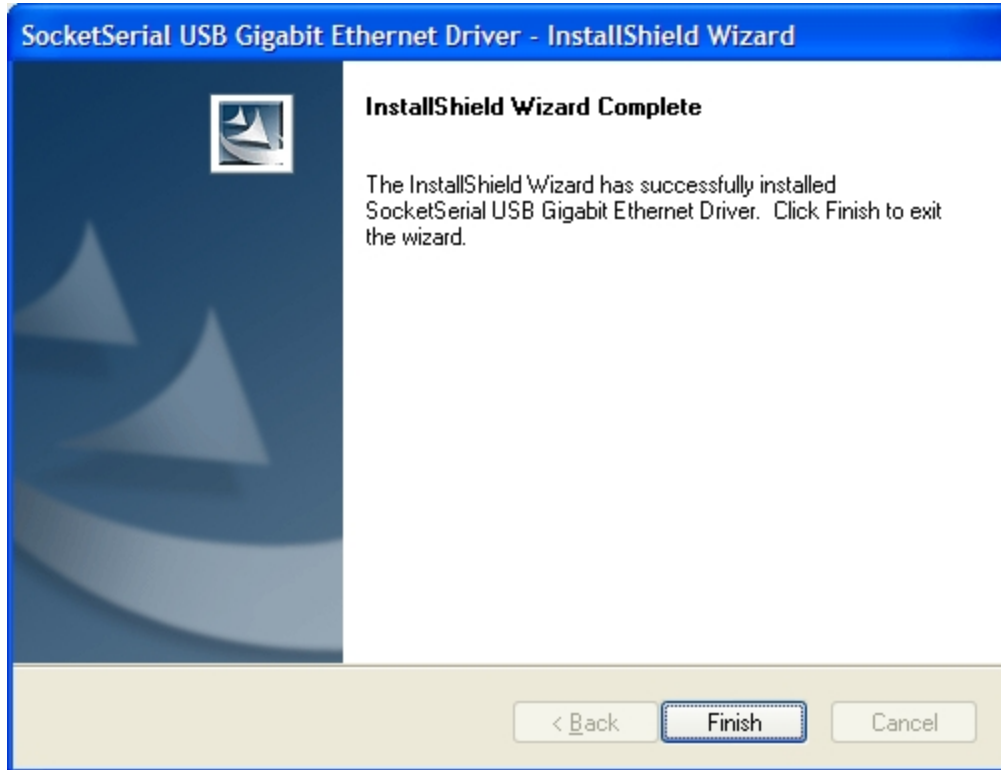
4. The destination screen will pop up. If you wish to install the drivers in a different directory, select 'Change' and choose an appropriate destination. If you wish to accept the default location of the drivers, simply choose 'Next' to continue.



5. Next, choose 'Install' to complete the installation.



6. Your SocketSerial USB Gigabit Ethernet Driver has been successfully installed. The ActiveSync will load the drivers. If your handheld device is not connected, ActiveSync will sync it the next time it connects. Click 'Finish' to exit.



Manual Installation with CAB

To manually install the drivers, you can navigate the installation CD using any general navigation tool to \install\WM. In that folder, find 'SocketSerial_v1.0.0.2.CAB' and move that file to your mobile device running the Windows Mobile OS. Once there, simply click on it to install.

Physical connection

PDA and handheld computers



For smaller handheld devices running Windows Mobile 5.0 or 6.0 OS, make sure you've installed the software before plugging in the unit. Many of the newer SoMo handheld computers have the drivers preinstalled. Once the software is installed, simply plug the USB cable to the laptop/computer and the bottom end of the adapter. Plug one end of the Ethernet cable into the top of the adapter, and the other into an Ethernet receptor that is connected to the network that you wish to communicate with (switch, router, hub).

Turn on the PDA/handheld computer. The USB Gigabit Ethernet adapter will get its power from the USB port on the PDA/handheld computer. As the computer boots up, you will see the link light (on the top right) turn green indicating that it has established a connection between the network and your PDA/handheld computer. The light at the top left will turn orange/green, orange, or green depending on the speed of the network that you are connected to (10, 100, 1000 mbps). The speed may vary depending on the traffic of other USB connections on your device.

Laptop or Desktop computer

For laptop and desktop computers, install the software prior to connecting the USB Gigabit Ethernet adapter to the computer. Once the software is installed, simply plug the USB cable to the laptop/computer and the bottom end of the adapter. Plug one end of the Ethernet cable into the top of the adapter, and the other into an Ethernet receptor that is connected to the network that you wish to communicate with (switch, router, hub).

Turn on the laptop/computer. The USB Gigabit Ethernet adapter will get its power from the USB port on the laptop/computer. As the computer boots up, you will see the link light (on the top right) turn green indicating that it has established a connection between the network and your laptop/computer. The light at the top left will turn orange/green, orange, or green depending on the speed of the network that you are connected to (10, 100, 1000 mbps). The speed may vary depending on the traffic of other USB connections on your device.

Troubleshooting

Windows does not detect the USB Gigabit Ethernet Adapter when it is connected.

- The adapter may not be plugged into the computer correctly. Unplug the adapter and plug it back in securely

No lights are illuminated on the device when plugged in.

- Power may not be getting to the adapter through the USB port. Make sure the USB connections on the host computer/mobile device and the adapter are securely plugged in. Also, make sure that the host computer/mobile device is properly powered.

The link light is on but the Tx/Rx light is not.

- You may not be connected to the network. Make sure your Ethernet cable is attached from the adapter to an Ethernet outlet that is connected to your network.
- If your network does not have DHCP (does not assign an IP address automatically), you may need to assign an IP address to your host computer manually. Please familiarize yourself with your network settings or seek support from a source that supports your network.

Windows can not locate the driver for the USB Gigabit Ethernet Adapter.

- You may not be pointing the device to the correct location. Make sure the Installation CD is in the target computer, or the WM driver is on the WM device.

If these troubleshooting measures do not resolve your issues, please go to www.socketserial.com/support.htm for further support.

